



Total Solution Provider in Saw Device

SA315AP1

Remote Control, RF SAW Filter
Revision 0:



- Electrical Characteristics
 - Package Dimensions
 - Testing Environment
 - Frequency Characteristics
-

SAWNICS Inc.

460 Cheonheung-ri, Seonggeo-eup, Cheonan-si, Chungcheongnam-do, 330-836 / Korea.
Tel: +82 41 550 9372 / Fax: +82 41 550 9399 / www.sawnics.com

□ Electrical Characteristics

Maximum Ratings

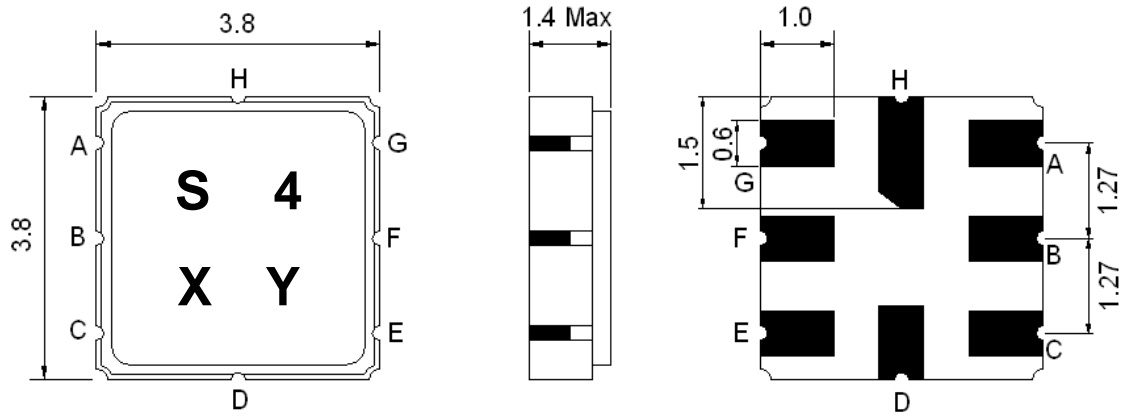
Parameters Description	Unit	Minimum	Typical	Maximum
Operating Temperature Range	°C	-40	-	+125
Storage Temperature Range	°C	-40	-	+85
Maximum DC Voltage	V	-	-	0
Maximum Input Power	dBm	-	-	10
Source Impedance (single ended) ⁽¹⁾	Ω	-	50	-
Load Impedance (single ended) ⁽¹⁾	Ω	-	50	-
Package type & size	P1			
Length x Width	mm ²	-	3.8 x 3.8	-
Height	mm	-	-	1.4

Electrical Specification

Parameters Description	Unit	Minimum	Typical	Maximum
Center Frequency (Fo)	MHz	-	315.0	-
Insertion Loss within 314.82 ~ 315.22 MHz	dB	-	2.2	4.0
Passband(relative to IL min)				
314.77 ~ 315.2 MHz	dB	-	1.5	3.0
314.71 ~ 315.26 MHz	dB	-	2.0	6.0
3dB Passband Width(relative to IL min)	MHz	0.8	0.92	-
Attenuation				
10 ~ 270.0 MHz	dB	45	50	-
270.0 ~ 309.0 MHz	dB	30	35	-
309.0 ~ 313.94 MHz	dB	15	20	-
316.0 ~ 335.0 MHz	dB	10	15	-
335.0 ~ 400.0 MHz	dB	35	40	-
400.0 ~ 1000.0 MHz	dB	45	50	-

Notes : (1) With Matching Network .

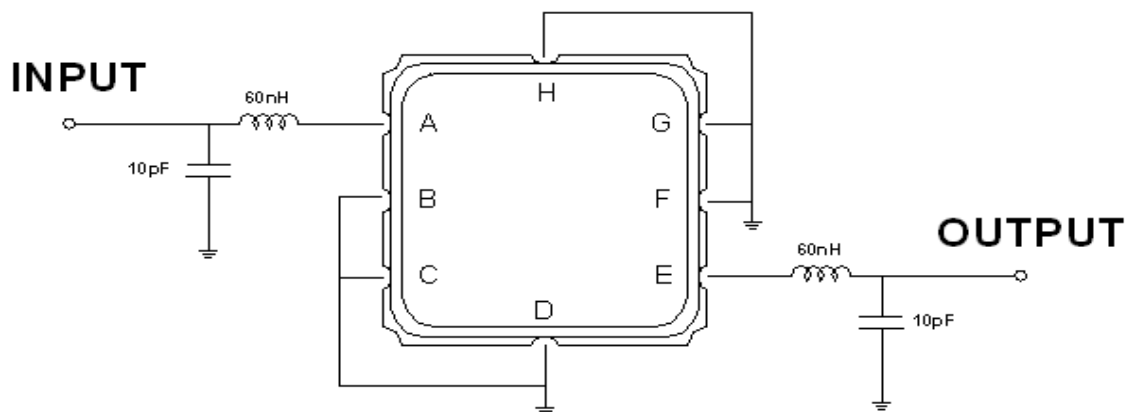
Package Dimensions



Marking Descriptions	
S	TCRF Application
4	Series Number
X	Date Code(Year)
Y	Date Code(Month)

Pin Description	
B, C, D, F, G, H	Ground
A	In
E	Out

Testing Environment



Source & Load Impedance: 50 Ω

□ Frequency Characteristics

Frequency Response

